

फोन नम्बर/फैक्स : 23019120  
आर्मी नम्बर- 35731

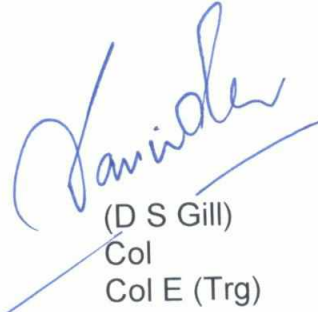
48703/SRAC-02/24-25/08/E (Trg)

27 Jun 2024

एकीकृत मुख्यालय रक्षा मंत्रालय (सेना)/INTEGRATED HQ OF MoD (ARMY)  
प्रमुख अभियंता शाखा ई(प्रशिक्षण)/ENGINEER-IN-CHIEF'S BRANCH/ E (TRG)

**UPLOADING OF JOINING INSTRUCTION ON MES WEBSITE FOR SUPERINTENDENT**  
**REFRIGERATION AND AIR CONDITIONING (SRAC)-02 COURSE**

A copy of College of Military Engineering Pune letter No 9430/SRA/93/GT dt 14 Jun 2024 is fwd herewith to upload the contents of this letter on ADN and MES Website restriction mode pl.

  
(D S Gill)  
Col  
Col E (Trg)

**Encls:** As above

**Automation Cell**



Tele - 5005

College of Military Engineering  
CME PO, Pune-411 031

9430/SRA/ 93 /GT

14 Jun 24

Automation Cell  
E-in-C's Branch  
IHQ of MoD (Army)  
Pin - 908 710  
C/o 56 APO.

**UPLOADING OF JOINING INSTRUCTION ON MES WEBSITE FOR SUPERINTENDENT  
REFRIGERATION AND AIR CONDITIONING (SRAC) - 02 COURSE**

1. PI ref E-in-C's Branch (E-Trg) letter No 48703/SRAC-02/23-24/01/E (Trg) dt 06 May 2024.
2. A copy of Joining Instructions in r/o SRAC-02 course wef 15 Jul to 21 Sep 2024 is fwd herewith.
3. **E-in-C's Branch (E-Trg) only.** Request confirm the uploading of the sub Joining Instructions pl.
4. For info and necessary action pl.



(Ravinder Pal Singh)  
Lt Col  
GSO 1 (Trg)  
for Comdt

**Encl** :- (As above).

**Copy to** :-

E-in-C's Branch (E-Trg)  
IHQ of MoD (Army)  
Pin - 908 710  
C/o 56 APO.

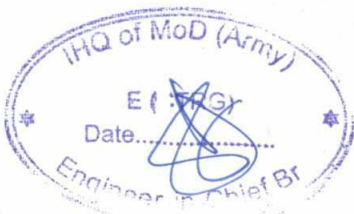


**JOINING INSTRUCTION FOR SUPERINTENDENT REFRIGERATION AND  
AIR-CONDITIONING (SRAC) SER NO- 02 COURSE  
AT FACULTY OF ELECTRICAL AND MECHANICAL ENGG  
COLLEGE OF MILITARY ENGINEERING (CME), PUNE**

**TRG INSTRS**

**Gen**

1. On behalf of Comdt, FE/M Cdr and all rks of CME, we extend a warm welcome to you for attending **SRAC-02** at the College. The course is scheduled from 15 Jul 24 to 21 Sep 24 and **CANDIDATES** are required to report to CME **two days** prior to the commencement of the course. CME is loc in the city of Pune (State of Maharashtra). **The candidates will undergo Ten weeks Trg Capsule on Heating Ventilation and Ref and Air Conditioning systems post 15 Jul 24.**
2. CME is a premier Cat 'A' Est resp for imparting trg to offr and JCOs /OR of IA/ IN/IAF and selected pers from CAPF, PMF, Civ agencies and Friendly Foreign Countries.
3. The est has various Facs/Wgs that are resp for trg and adm aspects. A brief on CME and its Facs/Wgs is attached as Appx 'A'.
4. **Responsibility** : Mechanical Dept
5. **Course Prof** : HOD Mech
6. **Course Offr** : Dr SR Pramanik, Prof  
(a) Alt Course Offr : Dr MK Borate, Asst Prof  
(b) Course Co-ordinator : Shri Devendra Kumar, D'Man Mech
7. **Capacity** : 24 (Incl 06 FFCs)
8. **Duration of the course** : 10 Weeks
9. **Course Schedule** : 15 Jul 24 to 21 Sep 24
10. **Eligibility.** Diploma holder in Mech/ Electrical Engg with three yrs min service.
11. **QR.** Basic knowledge of Thermodynamics cycle, mode of heat transfer, Refrigerants, pressure & temp relationship. Basics of Refrigeration and Air-conditioning plants, Faults & Leak detection, Gas cylinder storage rules.
12. **Action prior to Commencement of the Course.** Prior to commencement of the course an introduction/ test on basics of thermodynamics, electric motors, refrigeration and Air-conditioning plants will be done.
13. **Scope.** Students will be trained in Electrical and Mech Engg in principles, design installation, troubleshooting, repair, maint of refrigeration and air conditioning eqpts. Syllabus incl practical exposure and outdoor vis to relevant army, govt and private firms in Pune city. Appx 'B'



14. **Methods of Instructions.**

**Lec and Psns.** During 10 weeks of Learning Process the trainees will cover 04 technical subjects taught in the form of lecture and psns.

- a) **Tutorials and Discussions.** 10% of the syllabus in each subject will be taught in term of tutorials and assignments.
- b) **Practical and Evaluation.** 50% of the syllabus of most of the subjects will be covered in form of practicals and and training on live equipments/ systems. Evaluation/assignments will be carried out in the form of two phase tests, practical tests, class test, assignments and End Semester Exams.
- c) **Trg Visits / Guest lecture.** Weekly Industrial visits will be conducted in each semester during the course.

15. **Wks Hrs.** On wkg days, classes are conducted from 0815 hrs to 1400 hrs. The timings for various courses ex may extended to evening hrs. (On Tuesday 1530 hrs to 1700 hrs). Students will maintain punctuality and will be seated in the class five mins prior to the commencement of class.

16. **Ref materials/ Books Recommended.**

- a) Thermodynamics by B L Singhal
- b) Ref & Air Conditioning by CP Arora
- c) Ref & Air Conditioning by P K Nag
- d) Air Conditioning Manual by UH Sakalkar



ADM INSTRS

Reception

1. You are reqd to intimate the date and time of your arr by ASIGMA/ Fax/Log to **HQ CME Adm Branch, CME Pune-31, 15 days in advance**, so that arrngs can be made for accn and Mech dept FE/M or RXN centre.
2. **Rxn Cell\_A** rxn cell will be est at the rxn centre, next to CME CSD. All offrs, whether staying in single offrs block or temp md accn, will report to the rxn cell for initial docu. Detsl to be submitted on arr as under:-
  - a) Info Card along with passport size photographs (two Nos photographs reqd). The photographs pasted should be of lab quality. No Xerox info card or photos will be accepted (Appx to C)
  - b) Mov order and LRC (If applicable).
3. **Tpt-** tpt from airport/ railway stn will be provided to **FFC candidates** in case of prior intimation of travel plans.
4. **Accn.** Single transient accn in JCO/ OR mess will be allotted to all candidates undergoing the courses.
5. **Useful contact No :-**
  - a) CME Tele No : 26025046 (MT Yard)
  - b) Reception Centre : 26025055
  - c) SO1 (Coord ), F E/M : 5082(O), 5383(R).
  - d) OIC EP/CP : 5088 (O)
  - e) CME Exchange : 27146560
  - f) Mii Course Coordinator : Nb Sub Sharad Lagad (8145474784)



BRIEF ON CME

PART I :GENERAL

Location

1. The College is located astride the old Pune - Nasik Highway (the main road) and close to the River Mula. If you mull for a moment, you will realise that the College has been established following the principles of not just ancient townships, but the best of civilisations itself, that is, ideal climate and proximity to water and routes of communications. CME too has really lived up to its inception philosophy by not just being a college, but also a civilisation by itself.

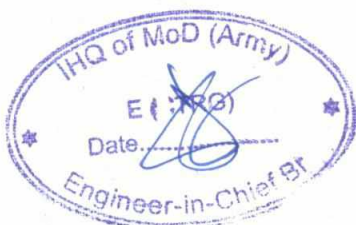
History

2. In 1934, the first Indian Engineer officers (after training at the Royal Military Academy, Woolwich) were given instruction in Military Engineering at the School of Military Engineering, Chatham. As the requirement of Engineer Officers increased during World War - II, Officer Cadet Training units were established at the three Engineer Centres at Bangalore, Roorkee and Kirkee, where cadets were given military as well as field engineering training.

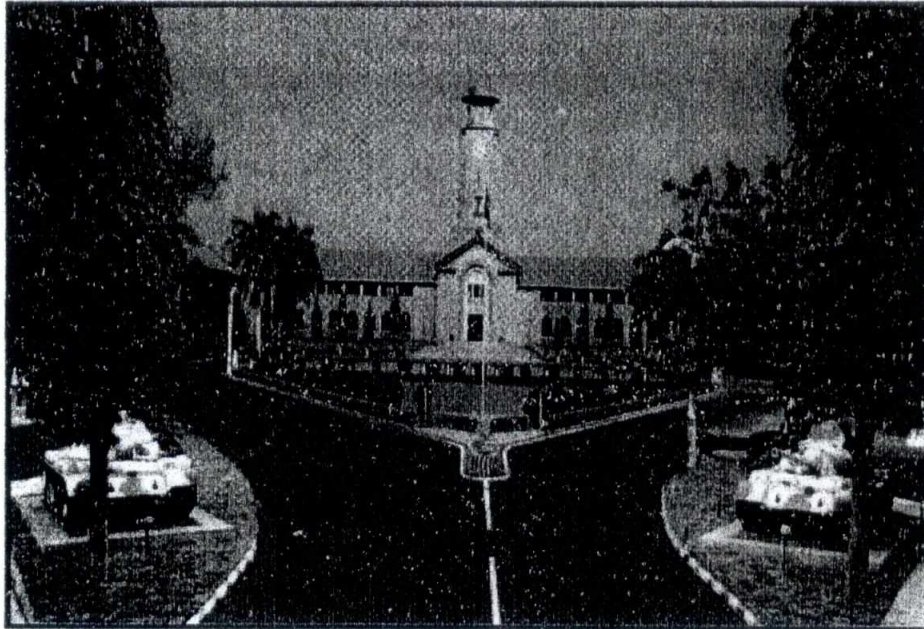
3. After World War-II, it became evident that centralised training of officers and other ranks of the Corps was essential. Therefore, it became necessary to find a home for the School of Military Engineering. The School started functioning in Thomson College, Roorkee during November 1943. After careful consideration, to cater for its expansion, the present site at Pune was selected. By end 1947, the School of Military Engineering started moving to its new location at Pune and completed the move by mid 1948.

4. In November 1951, in view of the increased responsibilities and training facilities provided at the School, it was decided to change its name to '**College of Military Engineering**', in keeping with the higher status of the Degree Engineering Courses and recognition by the Institution of Engineers (India). Work on permanent construction commenced in 1948 and most of the accommodation was completed by 1958. Rapid expansion of the College took place after 1963 to cater for the increased intake necessitated by the expansion of the Army.

5. *Alma Mater* of all Engineer Officers, CME is one of the Category 'A' establishments of the Army, under the Army Training Command (ARTRAC).CME has a role encompassing training, advisory, projects and research and experimentation for the Combat Engineers, Military Engineering Service, Border Roads Organisation and Survey. The training is conducted for personnel of the Corps of Engineers, other Arms and Services, Navy, Air Force, Para Military Forces, the police and civilians as well as personnel from Friendly Foreign Countries.



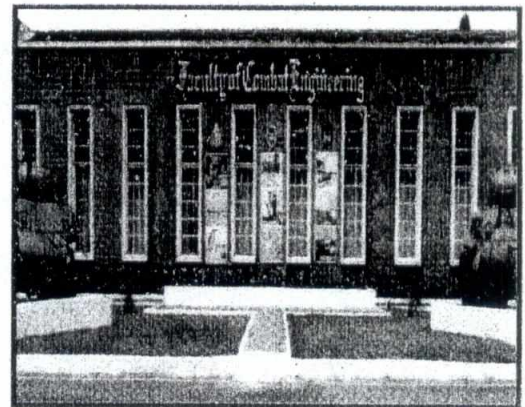
6. **Main Bldg.** As you enter CME through the Buland Darwaza, you see the majestic main bldg. This bldg houses the HQ, the Faculty of Studies and the Faculty of Civ Engg.



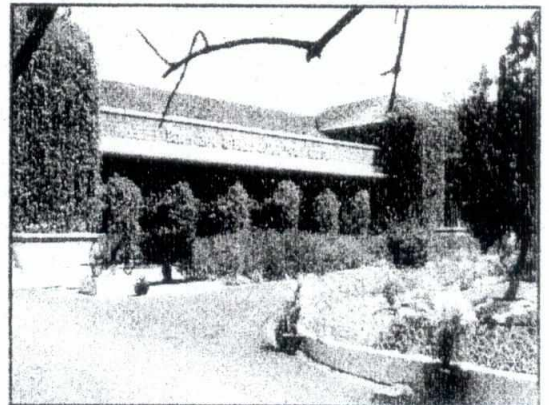
**MAIN BLDG**

**PART II: VARIOUS FACULTIES/WINGS OF THE COLLEGE**

7. **Faculty of Combat Engineering (FCE).** Newly Commissioned officers receive their baptism here to become effective combat engineers. Engineer Officers at Field Company and Engineer Regiment level receive combat engineering training. Package courses in combat engineering, bridging, bomb and IED disposal and strategic camouflage are conducted for all ranks of the army, navy, air force, para-military and police. This faculty advises other training establishments on tactical concepts, equipment and technical directions pertaining to military engineering. The Faculty of Studies, Doctrine and Concept Development(FSDCD), Army Rowing Node (ARN), Corps of Engineers Sailing Club (CESC) and HBTC Marve also function under FCE.



8. **Faculty of Electrical and Mechanical Engineering (F E/M).** B Tech courses in Mechanical and Electrical engineering are conducted in this faculty. Signals and EME officers also attend first part of their B Tech course at this faculty. Package courses for Officers, PBOR and Civ(MES) engineering trades and skills are conducted here. Research and Experimentation in Electrical and Mechanical Engineering equipment and techniques are part of the multifarious activities



in this faculty. Your course will be conducted by Mech Dept FE/M at Ref A/C Lab.

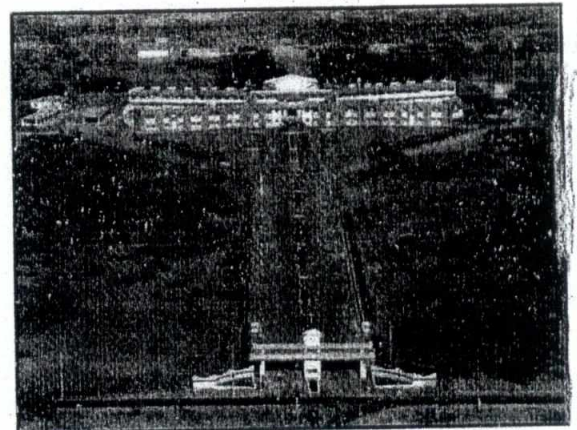
9. **Faculty of Civil Engineering**

**(F Civ).** This faculty runs B Tech engineering course in Civil Engineering for Engineer Officers. Routine and advanced tests on engineering materials used in works projects are also conducted here. Research and experimentation in civil engineering equipment and techniques are also carried out.

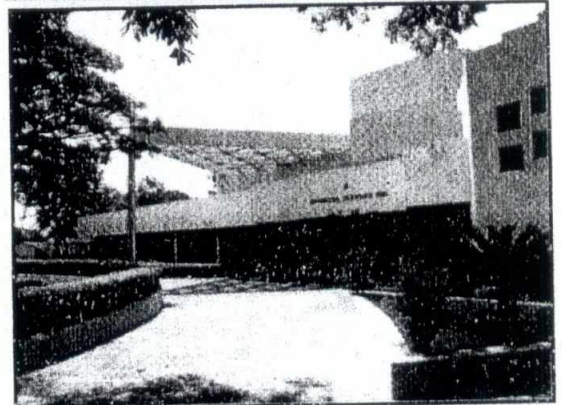


10. **Faculty of Chemical, Biological, Radiological and Nuclear Protection (F CBRNP)**

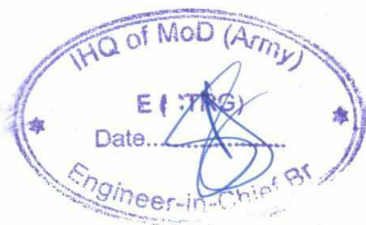
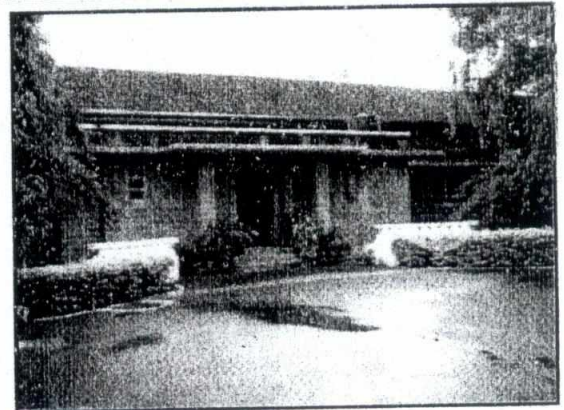
It is the premier CBRN organisation of the armed forces. It conducts courses in CBRN for senior and junior officers of all three services and for JCOs/OR.



11. **Information Technology Wing (IT Wing)**. It caters to the IT training in the College, various courses for officers, JCOs and OR. It also maintains the CME LAN and is responsible for all IT related matters in the College.



12. **Soil and Material Testing Wing**. Soil Engineering and Material Testing (SEMT) Wing is a prestigious technical organisation of the Corps which is responsible for undertaking soil investigations, airfield pavement evaluations and testing of construction materials for ascertaining their suitability for various construction projects undertaken by MES.

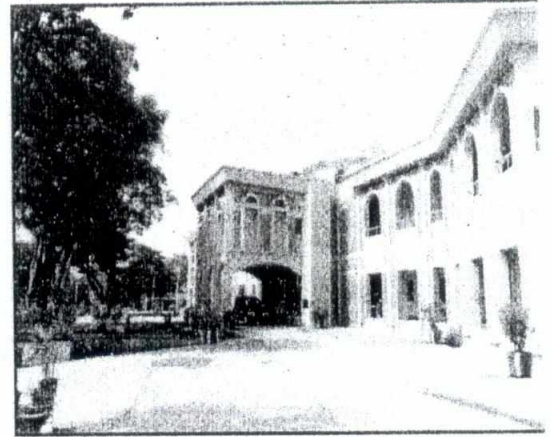




13. **Faculty of ConstrMgt (FCM).** The recently est Fac has two wings.

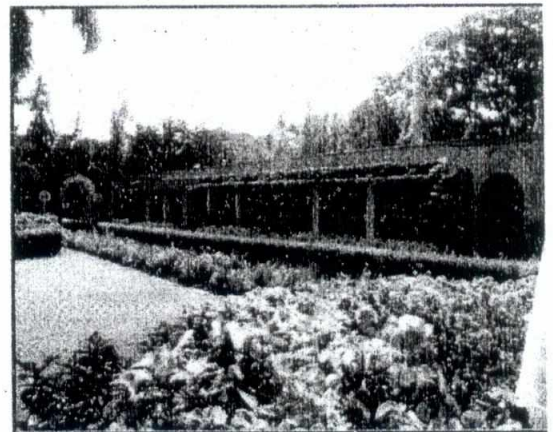
(a) **Diploma Wing.** Two years Diploma courses are conducted here for subordinate staff in electrical & Mechanical, Civil and Architecture category. Soldiers from friendly foreign countries like Maldives, Sri Lanka, Bangladesh and Nepal are also trained here.

(b) **Wks Mgt Wing.** Package courses in works services for all ranks are also conducted in this faculty.



14. **Faculty of Highway Engg (FHE).** Established in Jun 2014, the Fac imparts training on highway construction and maintenance to Army & GREF officers and other personnel.

15. **Administration Wing.** This wing provides complete administrative support to the College. 'D' Coy of this wing deals with documentation of officers.



16. **Cadets Training Wing (CTW).** Established in the Year 2000, it is the most dynamic wing. It is a premier pre-commission training institute, which trains Gentlemen Cadets of Technical Entry Scheme (TES) to be commissioned as technical graduates into all arms of the Indian Army.



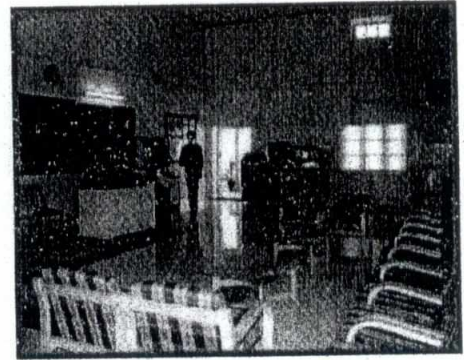
17. **Institute of National Integration.** The Institute of National Integration (INI) was established in 1985 to preach **commonality of religions, spirit of tolerance** as well as our rich cultural heritage and thus propagate national integration based on the cohesion and inter-faith harmony which prevails in the Army. The Institute imparts instructions to officers, JCOs, NCOs and Religious Teachers (RTs) on the cultural heritage of India as well as religious and regional tolerance, National Integration and Behavioural Social Science. Religious Teachers are commissioned at this Institute.

**Harkirat Singh Open Air Theatre.** Named after a legendary Sapper, Major General Harkirat Singh, this open-air theatre is the favourite haunt for all movie lovers in CME. You will rarely need to venture out for a movie. The theatre screens two films in a week. English movies are screened on Wed. New release Hindi movies are shown on Fri. The open air theatre is also equipped with a 5.1 Ch Digital Surround Sound Sys for a theatre effect.



18. **Religious Institutes.** All religious institutions exist here, with learned and broadminded religious teachers to help you unite with God. They provide solace during troubled times, peace of mind and an opportunity to learn about different faiths.

19. **Reception Centre.** The heart of the College, the reception centre is abuzz with activity round the clock as the staff available here, guides and provides all information to the visitors coming to the college. It caters for tea, coffee, soft drinks, internet, fax and STD facilities besides offering newspapers and latest magazines. Reception of all courses is organised here.

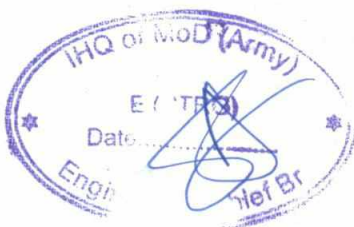
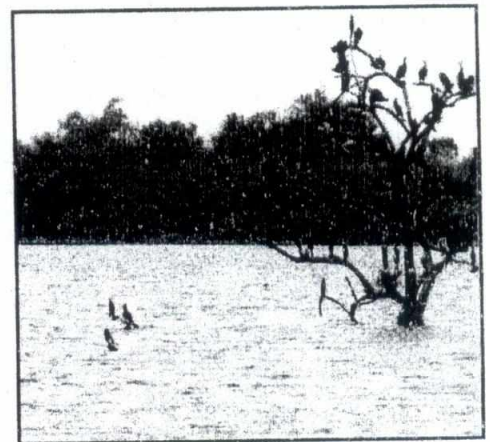


20. **Nursery.** It provides all common and rare plants, including indoor and outdoor plants.

21. **CME Canteen.** A renovated, large and extremely well stocked CSD canteen is located near the Reception Centre.

22. **Banks and ATMs.** Punjab National Bank, ICICI Bank and State Bank of India are located in CME. ATMs of PNB, HDFC, ICICI and SBI are also located in the complex.

23. **Lakes.** Three fresh water lakes have been created in the CME campus under the Wetland Development Project. These along with plantations and landscaping around have improved the flora, fauna and climate of the campus. Aquaculture and ornithology are also pursued here. These lakes are the favourite visiting sites of not only all visitors, but numerous fish and migratory birds as well. One can see turtles, snakes, rabbits, peacocks and also squirrels. While CME itself can be treated as one huge jogging or walking plaza, there is a dedicated walking plaza around these lakes, out of bound for traffic, letting you move unhindered in the lap of nature.



ARRIVAL REPORT : SRAC- 02 TRAINEESTraining Institution: FE/M College of Military Engineering, Pune - 31

Ser No	Course	Schedule	No and Name of Foreign Trainee	Country	Date and Time of arrival in India	Date and Time of arrival in CME	Photograph	Sign of Trainees

